

# Chem-Impex International, Inc.

---

**Tel:** (630) 766-2112

**E-mail:** sales@chemimpex.com

**Shipping and Correspondence:**

935 Dillon Drive

Wood Dale, IL 60191

**Fax:** (630) 766-2218

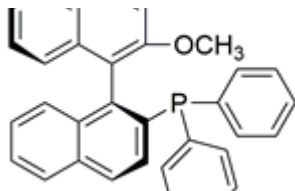
**Web site:** www.chemimpex.com

**Manufacturing site:**

825 Dillon Drive

Wood Dale, IL 60191

---



## Product Specifications

<b>Catalogue Number</b>	40731
<b>Product</b>	<b>(S)-(-)-2-Diphenylphosphino-2'-methoxy-1,1'-(S)-(2'-Methoxy-[1,1'-binaphthalen]-2-yl)diphenylphosphane</b> (S)-(-)-MOP
<b>CAS Number</b>	134484-36-9
<b>Molecular Formula</b>	C <sub>33</sub> H <sub>25</sub> OP
<b>Molecular Weight</b>	468.54

---

<b>Appearance</b>	White to light yellow powder or crystal
<b>Solubility</b>	Almost soluble in toluene
<b>Melting Point</b>	175 - 179 °C
<b>Optical Rotation</b>	[α] <sup>20</sup> <sub>D</sub> = -95 to -91 ° (C = 0.3 in CHCl <sub>3</sub> )
<b>Solvent</b>	≤ 0.5%
<b><sup>1</sup>H NMR</b>	Conforms to structure
<b><sup>31</sup>P NMR</b>	Conforms to structure
<b>Purity by HPLC</b>	≥ 99%
<b>Storage</b>	Store at ≤ -4 °C

**For Laboratory Use Only**