

Chem-Impex International, Inc.

Tel: (630) 766-2112

E-mail: sales@chemimpex.com

Shipping and Correspondence:

935 Dillon Drive

Wood Dale, IL 60191

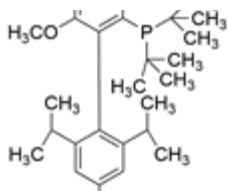
Fax: (630) 766-2218

Web site: www.chemimpex.com

Manufacturing site:

825 Dillon Drive

Wood Dale, IL 60191



Product Specifications

Catalogue Number	40730
Product	Di-tert-butyl(2',4',6'-triisopropyl-3,6- 2-(Di-tert-butylphosphino)-2',4',6'- triisopropyl-3,6-dimethoxy-1,1'- [3,6-Dimethoxy-2',4',6'-tris(1-methylethyl) [1,1'-biphenyl]-2-yl]
CAS Number	1160861-53-9
Molecular Formula	C ₃₁ H ₄₉ O ₂ P
Molecular Weight	484.7

Appearance	White solid
Solubility	Colorless liquid
Melting Point	169 - 172 °C
Insoluble	≤ 1% (DCM)
Purity by HPLC	≥ 99%
Storage	Store at 2 - 8 °C

For Laboratory Use Only