

# Chem-Impex International, Inc.

---

**Tel:** (630) 766-2112

**E-mail:** sales@chemimpex.com

**Shipping and Correspondence:**

935 Dillon Drive

Wood Dale, IL 60191

**Fax:** (630) 766-2218

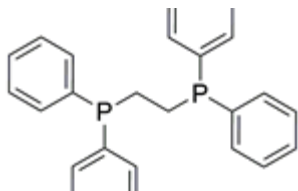
**Web site:** www.chemimpex.com

**Manufacturing site:**

825 Dillon Drive

Wood Dale, IL 60191

---



## Product Specifications

<b>Catalogue Number</b>	40726
<b>Product</b>	<b>1,2-Bis(diphenylphosphino)ethane</b> Ethylenebis(diphenylphosphine)
<b>CAS Number</b>	1663-45-2
<b>Molecular Formula</b>	C <sub>26</sub> H <sub>24</sub> P <sub>2</sub>
<b>Molecular Weight</b>	398.43

---

<b>Appearance</b>	White or off-white solid
<b>Melting Point</b>	139 - 142 °C
<b><sup>1</sup>H NMR</b>	Conforms to structure
<b><sup>31</sup>P NMR</b>	Conforms to structure
<b>Purity by HPLC</b>	≥ 99%
<b>Purity</b>	≥ 99% (NMR)
<b>Storage</b>	Store at RT

**For Laboratory Use Only**