

# Chem-Impex International, Inc.

---

**Tel:** (630) 766-2112

**E-mail:** sales@chemimpex.com

**Shipping and Correspondence:**

935 Dillon Drive

Wood Dale, IL 60191

**Fax:** (630) 766-2218

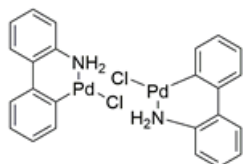
**Web site:** www.chemimpex.com

**Manufacturing site:**

825 Dillon Drive

Wood Dale, IL 60191

---



## Product Specifications

<b>Catalogue Number</b>	40712
<b>Product</b>	<b>Di-μ-chlorobis(2'-amino-1,1'-biphenyl)-2,2'-ylidene</b> Bis[2'-(amino-êN)[1,1'-biphenyl]-2-yl-ê
<b>CAS Number</b>	847616-85-7
<b>Molecular Formula</b>	C <sub>24</sub> H <sub>20</sub> Cl <sub>2</sub> N <sub>2</sub> Pd <sub>2</sub>
<b>Molecular Weight</b>	620.18

---

<b>Appearance</b>	Beige to gray powder
<b>Insoluble</b>	≤ 1% in DCM
<b><sup>1</sup>H NMR</b>	Conforms to structure
<b>Purity</b>	≥ 98% (NMR)
<b>Storage</b>	Store at RT

**For Laboratory Use Only**