

# Chem-Impex International, Inc.

---

**Tel:** (630) 766-2112

**E-mail:** sales@chemimpex.com

**Shipping and Correspondence:**

935 Dillon Drive

Wood Dale, IL 60191

**Fax:** (630) 766-2218

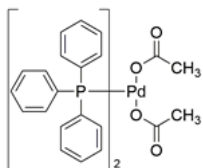
**Web site:** www.chemimpex.com

**Manufacturing site:**

825 Dillon Drive

Wood Dale, IL 60191

---



## Product Specifications

<b>Catalogue Number</b>	40670
<b>Product</b>	<b>Bis(triphenylphosphine)palladium(II)</b> Bis(acetato)bis(triphenylphosphine)palladium(II)
<b>CAS Number</b>	14588-08-0
<b>Molecular Formula</b>	C <sub>40</sub> H <sub>36</sub> O <sub>4</sub> P <sub>2</sub> Pd
<b>Molecular Weight</b>	749.09

---

<b>Warnings</b>	<i>Air sensitive! Heat sensitive! Store under inert gas!</i>
<b>Appearance</b>	Light yellow to amber powder to crystal
<b>Assay</b>	Pd : ≥ 14.2%
<b>Assay by titration</b>	≥ 98%
<b>Storage</b>	Store at ≤ -4 °C

**For Laboratory Use Only**