

Chem-Impex International, Inc.

Tel: (630) 766-2112

E-mail: sales@chemimpex.com

Shipping and Correspondence:

935 Dillon Drive

Wood Dale, IL 60191

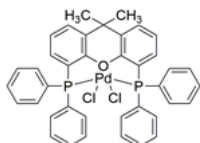
Fax: (630) 766-2218

Web site: www.chemimpex.com

Manufacturing site:

825 Dillon Drive

Wood Dale, IL 60191



Product Specifications

Catalogue Number	40667
Product	Dichloro[9,9-dimethyl-4,5- [4,5-Bis(diphenylphosphino)-9,9-dimethylxanthene] [4,5-Bis(diphenylphosphino)-9,9-dimethylxanthene]palladium(II)
CAS Number	205319-10-4
Molecular Formula	C ₃₉ H ₃₂ Cl ₂ OP ₂ Pd
Molecular Weight	755.95

Warnings	<i>Air sensitive! Store under inert gas!</i>
Appearance	Light yellow to brown crystal
Melting Point	287 °C (dec.)
¹H NMR	Conforms to structure
³¹P NMR	Conforms to structure
Assay	Pd : ≥ 12%
Assay by titration	≥ 98%
Storage	Store at 2 - 8 °C

For Laboratory Use Only