

# Chem-Impex International, Inc.

---

**Tel:** (630) 766-2112

**E-mail:** sales@chemimpex.com

**Shipping and Correspondence:**

935 Dillon Drive

Wood Dale, IL 60191

**Fax:** (630) 766-2218

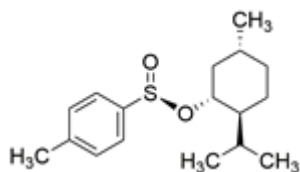
**Web site:** www.chemimpex.com

**Manufacturing site:**

825 Dillon Drive

Wood Dale, IL 60191

---



## Product Specifications

<b>Catalogue Number</b>	39617
<b>Product</b>	<b>(1R,2S,5R)-(-)-Menthyl (S)-p-toluenesulfinate</b>
<b>CAS Number</b>	1517-82-4
<b>Molecular Formula</b>	C <sub>17</sub> H <sub>26</sub> O <sub>2</sub> S
<b>Molecular Weight</b>	294.45

---

<b>Appearance</b>	White to pale yellow solid
<b>Water Content (Karl Fisher)</b>	≤ 0.2%
<b>Optical Rotation</b>	[α] <sub>D</sub> <sup>20</sup> = -194 to -206 °
<b><sup>1</sup>H NMR</b>	Conforms to structure
<b>Purity</b>	≥ 98% (LC)
<b>Storage</b>	Store at 0 - 8 °C

**For Laboratory Use Only**