

Chem-Impex International, Inc.

Tel: (630) 766-2112

E-mail: sales@chemimpex.com

Shipping and Correspondence:

935 Dillon Drive

Wood Dale, IL 60191

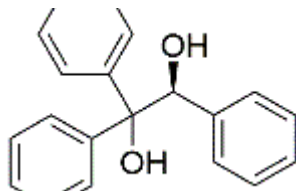
Fax: (630) 766-2218

Web site: www.chemimpex.com

Manufacturing site:

825 Dillon Drive

Wood Dale, IL 60191



Product Specifications

Catalogue Number	39591
Product	(S)-(-)-1,1,2-Triphenyl-1,2-ethanediol
CAS Number	108998-83-0
Molecular Formula	C ₂₀ H ₁₈ O ₂
Molecular Weight	290.36

Appearance	White to almost white crystalline powder
Melting Point	126 - 130 °C
Water Content (Karl Fisher)	≤ 0.5%
Optical Rotation	[α] _D ²⁰ = -215 to -225 ° (C=1 in Ethanol)
Purity by HPLC	≥ 97%
Storage	Store at RT

For Laboratory Use Only