

Chem-Impex International, Inc.

Tel: (630) 766-2112

E-mail: sales@chemimpex.com

Shipping and Correspondence:

935 Dillon Drive

Wood Dale, IL 60191

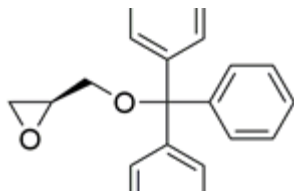
Fax: (630) 766-2218

Web site: www.chemimpex.com

Manufacturing site:

825 Dillon Drive

Wood Dale, IL 60191



Product Specifications

Catalogue Number	39553
Product	(S)-Glycidyl trityl ether (S)-Glycidyl Triphenylmethyl ether (S)-2-(Triphenylmethoxymethyl)oxirane
CAS Number	129940-50-7
Molecular Formula	C ₂₂ H ₂₀ O ₂
Molecular Weight	316.4

Appearance	Off-white powder
Melting Point	99 - 102 °C
Optical Rotation	[α] _D ²⁰ = -10 to -12 ° (C=1 in CHCl ₃)
Loss on Drying	≤ 0.5%
Purity by HPLC	≥ 98%
Storage	Store at RT

For Laboratory Use Only