

Chem-Impex International, Inc.

Tel: (630) 766-2112

E-mail: sales@chemimpex.com

Shipping and Correspondence:

935 Dillon Drive

Wood Dale, IL 60191

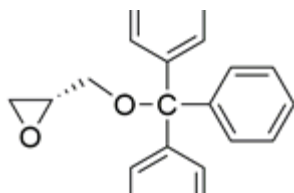
Fax: (630) 766-2218

Web site: www.chemimpex.com

Manufacturing site:

825 Dillon Drive

Wood Dale, IL 60191



Product Specifications

Catalogue Number	39545
Product	(R)-Glycidyl trityl ether (R)-Glycidyl triphenylmethyl ether (R)-2-(Triphenylmethoxymethyl)oxirane
CAS Number	65291-30-7
Molecular Formula	C ₂₂ H ₂₀ O ₂
Molecular Weight	316.4

Appearance	White to off-white powder
Optical Rotation	[α] _D ²⁰ = 10 - 12 ° (C=1 in CHCl ₃)
Loss on Drying	≤ 0.5%
¹H NMR	Conforms to structure
Chiral HPLC	≥ 99% (ee)
Other Enantiomer	≤ 1%
Purity by HPLC	≥ 99%
Storage	Store at RT

For Laboratory Use Only