

Chem-Impex International, Inc.

Tel: (630) 766-2112

E-mail: sales@chemimpex.com

Shipping and Correspondence:

935 Dillon Drive

Wood Dale, IL 60191

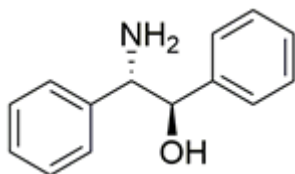
Fax: (630) 766-2218

Web site: www.chemimpex.com

Manufacturing site:

825 Dillon Drive

Wood Dale, IL 60191



Product Specifications

Catalogue Number	39498
Product	(1R,2S)-(-)-2-Amino-1,2-diphenylethanol
CAS Number	23190-16-1
Molecular Formula	C ₁₄ H ₁₅ NO
Molecular Weight	213.28

Appearance	White to pale yellow crystal or powder
Melting Point	141 - 144 °C
Optical Rotation	[α] _{20D} = -6 to -8 ° (C=0.6 in EtOH)
Chiral HPLC	≥ 99% (ee)
Other Enantiomer	≤ 1%
Purity by HPLC	≥ 99%
Storage	Store at RT

For Laboratory Use Only