

# Chem-Impex International, Inc.

---

**Tel:** (630) 766-2112

**E-mail:** sales@chemimpex.com

**Shipping and Correspondence:**

935 Dillon Drive

Wood Dale, IL 60191

**Fax:** (630) 766-2218

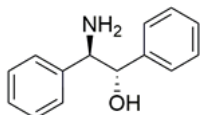
**Web site:** www.chemimpex.com

**Manufacturing site:**

825 Dillon Drive

Wood Dale, IL 60191

---



## Product Specifications

|                          |  |
|--------------------------|--|
| <b>Catalogue Number</b>  | 39483  |
| <b>Product</b>           | <b>(1S,2R)-(+)-2-Amino-1,2-diphenylethanol</b> |
| <b>CAS Number</b>        | 23364-44-5                                     |
| <b>Molecular Formula</b> | C <sub>14</sub> H <sub>15</sub> NO             |
| <b>Molecular Weight</b>  | 213.28   |

---

|                         |  |
|-------------------------|--|
| <b>Appearance</b>       | White to pale yellow crystal or powder                   |
| <b>Melting Point</b>    | 141 - 144 °C   |
| <b>Optical Rotation</b> | [α] <sub>D</sub> <sup>20</sup> = 6 - 8 ° (C=0.6 in EtOH) |
| <b>Chiral HPLC</b>      | ≥ 99% (ee)   |
| <b>Other Enantiomer</b> | ≤ 1%   |
| <b>Purity by HPLC</b>   | ≥ 99%  |
| <b>Storage</b>          | Store at 0 - 8 °C  |

**For Laboratory Use Only**