

Chem-Impex International, Inc.

Tel: (630) 766-2112

E-mail: sales@chemimpex.com

Shipping and Correspondence:

935 Dillon Drive

Wood Dale, IL 60191

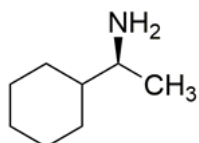
Fax: (630) 766-2218

Web site: www.chemimpex.com

Manufacturing site:

825 Dillon Drive

Wood Dale, IL 60191



Product Specifications

Catalogue Number	39474
Product	(S)-(+)-1-Cyclohexylethylamine (S)-(+)-(1-Aminoethyl)cyclohexane
CAS Number	17430-98-7
Molecular Formula	C ₈ H ₁₇ N
Molecular Weight	127.23

Appearance	Colorless to almost colorless clear liquid
Assay by titration	≥ 99% (Nonaqueous titration)
Other Enantiomer	≤ 3.5%
Purity by GC	≥ 99%
Chiral Purity	≥ 96.5% (ee)
Storage	Store at RT

For Laboratory Use Only