

# Chem-Impex International, Inc.

---

**Tel:** (630) 766-2112

**E-mail:** sales@chemimpex.com

**Shipping and Correspondence:**

935 Dillon Drive

Wood Dale, IL 60191

**Fax:** (630) 766-2218

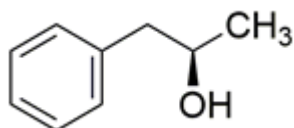
**Web site:** www.chemimpex.com

**Manufacturing site:**

825 Dillon Drive

Wood Dale, IL 60191

---



## Product Specifications

<b>Catalogue Number</b>	39416
<b>Product</b>	<b>(R)-1-Phenyl-2-propanol</b>
<b>CAS Number</b>	1572-95-8
<b>Molecular Formula</b>	C <sub>9</sub> H <sub>12</sub> O
<b>Molecular Weight</b>	136.19

---

<b>Appearance</b>	Light yellow to yellow oily liquid
<b>Optical Rotation</b>	[α] <sub>20D</sub> = -28 ± 1 ° (C=2.25 in Hexane)
<b><sup>1</sup>H NMR</b>	Conforms to structure
<b>Purity</b>	≥ 95% (NMR)
<b>Storage</b>	Store at 2 - 8 °C

**For Laboratory Use Only**