

Chem-Impex International, Inc.

Tel: (630) 766-2112

E-mail: sales@chemimpex.com

Shipping and Correspondence:

935 Dillon Drive

Wood Dale, IL 60191

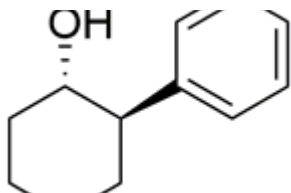
Fax: (630) 766-2218

Web site: www.chemimpex.com

Manufacturing site:

825 Dillon Drive

Wood Dale, IL 60191



Product Specifications

Catalogue Number	39405
Product	(1S,2R)-(+)-trans-2-Phenyl-1-cyclohexanol
CAS Number	34281-92-0
Molecular Formula	C ₁₂ H ₁₆ O
Molecular Weight	176.26

Appearance	White to light yellow powder
Optical Rotation	$[\alpha]_D^{20} = 55 \pm 1^\circ$ (C=10 in MeOH)
¹ H NMR	Conforms to structure
Chiral HPLC	≥ 99% (ee)
Other Enantiomer	≤ 1%
Purity by HPLC	≥ 98%
Storage	Store at 2 - 8 °C

For Laboratory Use Only