

Chem-Impex International, Inc.

Tel: (630) 766-2112

E-mail: sales@chemimpex.com

Shipping and Correspondence:

935 Dillon Drive

Wood Dale, IL 60191

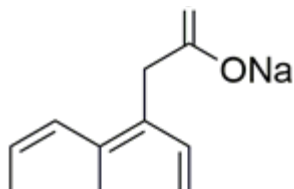
Fax: (630) 766-2218

Web site: www.chemimpex.com

Manufacturing site:

825 Dillon Drive

Wood Dale, IL 60191



Product Specifications

Catalogue Number	39292
Product	Sodium 1-naphthaleneacetate 1-Naphthylacetic acid sodium salt 1-Naphthaleneacetic acid sodium salt
CAS Number	61-31-4
Molecular Formula	C ₁₂ H ₉ NaO ₂
Molecular Weight	208.19

Appearance	Off-white solid
Melting Point	274 - 278 °C
¹H NMR	Conforms to structure
Purity	≥ 98% (NMR)
Storage	Store at RT

For Laboratory Use Only