

# Chem-Impex International, Inc.

---

**Tel:** (630) 766-2112

**E-mail:** sales@chemimpex.com

**Shipping and Correspondence:**

935 Dillon Drive

Wood Dale, IL 60191

**Fax:** (630) 766-2218

**Web site:** www.chemimpex.com

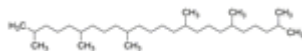
**Manufacturing site:**

825 Dillon Drive

Wood Dale, IL 60191

---

## Product Specifications



<b>Catalogue Number</b>	39257
<b>Product</b>	<b>Squalane</b> 2,6,10,15,19,23-Hexamethyltetracosane Cosbiol
<b>CAS Number</b>	111-01-3
<b>Molecular Formula</b>	C <sub>30</sub> H <sub>62</sub>
<b>Molecular Weight</b>	422.83

---

<b>Appearance</b>	Clear liquid
<b>Odor</b>	Typical odor
<b>Specific Gravity</b>	0.855 - 0.880 g/mL at 20 °C
<b>Refractive Index</b>	n <sub>20</sub> /D 1.490 - 1.498
<b>Heavy Metals</b>	≤ 5 ppm
<b>Acid value</b>	≤ 0.5 mg KOH/g
<b>Peroxide</b>	≤ 5 mEq/kg
<b>Saponification Value</b>	≤ 0.5 KOH/g
<b>Purity</b>	≥ 99% (GCMS)
<b>GCMS</b>	PCB : ≤ 50 ppb
<b>Storage</b>	Store at RT
<b>Additional Information</b>	Iodine value : 360 - 390 gI <sub>2</sub> /100g oil Taste : Typical taste

**For Laboratory Use Only**