

Chem-Impex International, Inc.

Tel: (630) 766-2112

E-mail: sales@chemimpex.com

Shipping and Correspondence:

935 Dillon Drive

Wood Dale, IL 60191

Fax: (630) 766-2218

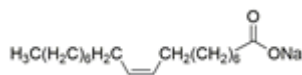
Web site: www.chemimpex.com

Manufacturing site:

825 Dillon Drive

Wood Dale, IL 60191

Product Specifications



Catalogue Number	39047
Product	Sodium oleate Oleic acid sodium salt
CAS Number	143-19-1
Molecular Formula	C ₁₈ H ₃₃ NaO ₂
Molecular Weight	304.45

Appearance	White to pale yellow powder
Loss on Drying	≤ 3%
Assay by titration	≥ 95% (on dried basis)
Storage	Store at ≤ -10 °C

For Laboratory Use Only