

Chem-Impex International, Inc.

Tel: (630) 766-2112

E-mail: sales@chemimpex.com

Shipping and Correspondence:

935 Dillon Drive

Wood Dale, IL 60191

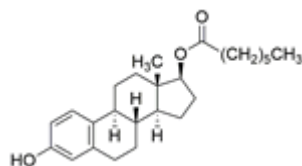
Fax: (630) 766-2218

Web site: www.chemimpex.com

Manufacturing site:

825 Dillon Drive

Wood Dale, IL 60191



Product Specifications

Catalogue Number	38717
Product	β-Estradiol 17-heptanoate β -Estradiol 17-enanthate
CAS Number	4956-37-0
Molecular Formula	C ₂₅ H ₃₆ O ₃
Molecular Weight	384.56

Appearance	White or almost white crystalline powder
Melting Point	94 - 99 °C
Optical Rotation	[α] _D ²⁰ = 37 - 43 °
Loss on Drying	≤ 1%
Particle Size	To pass test
Related Substances	Limit of estradiol : ≤ 1% Hepatic acid : ≤ 0.5% Related substance : ≤ 1%
Sulfated Ash	≤ 0.2%
Assay	97 - 103%
Storage	Store at RT

For Laboratory Use Only