

# Chem-Impex International, Inc.

---

**Tel:** (630) 766-2112

**E-mail:** sales@chemimpex.com

**Shipping and Correspondence:**

935 Dillon Drive

Wood Dale, IL 60191

**Fax:** (630) 766-2218

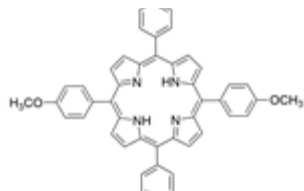
**Web site:** www.chemimpex.com

**Manufacturing site:**

825 Dillon Drive

Wood Dale, IL 60191

---



## Product Specifications

---

<b>Catalogue Number</b>	38698
<b>Product</b>	<b>5,10,15,20-Tetrakis(4-methoxyphenyl)</b> 5,10,15,20-Tetrakis(4-methoxyphenyl)-21H,23H-porphine
<b>CAS Number</b>	22112-78-3
<b>Molecular Formula</b>	C <sub>48</sub> H <sub>38</sub> N <sub>4</sub> O <sub>4</sub>
<b>Molecular Weight</b>	734.86

---

<b>Appearance</b>	Purple solid
<b>Solubility</b>	Soluble in DCM and Insoluble in water
<b>UV Ratios</b>	In CDCl <sub>3</sub> : 422 ± 1 nm, 519 ± 1 nm, 556 ± 1 nm, 593 ± 1 nm, 649 ± 1 nm
<b>Purity by HPLC</b>	≥ 97%
<b>Storage</b>	Store at RT

---

**For Laboratory Use Only**