

Chem-Impex International, Inc.

Tel: (630) 766-2112

E-mail: sales@chemimpex.com

Shipping and Correspondence:

935 Dillon Drive

Wood Dale, IL 60191

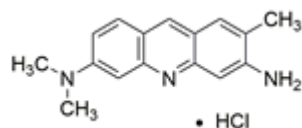
Fax: (630) 766-2218

Web site: www.chemimpex.com

Manufacturing site:

825 Dillon Drive

Wood Dale, IL 60191



Product Specifications

Catalogue Number	38611
Product	Coriphosphine O Basic yellow 7
CAS Number	5409-37-0
Molecular Formula	C ₁₆ H ₁₈ ClN ₃
Molecular Weight	287.79

Appearance	Orange to amber to dark red powder to crystal
UV Ratios	Absorbance(E ¹ %1cm) = ≥ 450 (MeOH (50vol%), λ _{max} = 494 - 498 nm)
Loss on Drying	≤ 20%
Grade	CI 46020
Storage	Store at RT

For Laboratory Use Only