

# Chem-Impex International, Inc.

---

**Tel:** (630) 766-2112

**E-mail:** sales@chemimpex.com

**Shipping and Correspondence:**

935 Dillon Drive

Wood Dale, IL 60191

**Fax:** (630) 766-2218

**Web site:** www.chemimpex.com

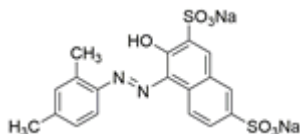
**Manufacturing site:**

825 Dillon Drive

Wood Dale, IL 60191

---

## Product Specifications



<b>Catalogue Number</b>	38584
<b>Product</b>	<b>Acid red 26</b> Ponceau de xylylidine Ponceau R
<b>CAS Number</b>	3761-53-3
<b>Molecular Formula</b>	C <sub>18</sub> H <sub>14</sub> N <sub>2</sub> Na <sub>2</sub> O <sub>7</sub> S <sub>2</sub>
<b>Molecular Weight</b>	480.42

---

<b>Appearance</b>	Red powder
<b>Solubility</b>	Clear red solution (1 mg/mL in water)
<b>UV Ratios</b>	Absorptivity 1%/1 cm at λ <sub>max</sub> 507 ± 1nm : ≤ 420
<b>Loss on Drying</b>	≤ 5% (110 °C, 1h)
<b>Dye content</b>	≥ 78%
<b>Grade</b>	CI 16150
<b>Storage</b>	Store at RT

**For Laboratory Use Only**