

Chem-Impex International, Inc.

Tel: (630) 766-2112

E-mail: sales@chemimpex.com

Shipping and Correspondence:

935 Dillon Drive

Wood Dale, IL 60191

Fax: (630) 766-2218

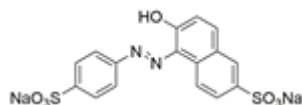
Web site: www.chemimpex.com

Manufacturing site:

825 Dillon Drive

Wood Dale, IL 60191

Product Specifications



Catalogue Number 38560

Product **Sunset yellow FCF**

CI 15985

CAS Number 2783-94-0

Molecular Formula C₁₆H₁₀N₂Na₂O₇S₂

Molecular Weight 452.36

Appearance Orange red powder

Solubility Orange red solution (1% in Water)

Heavy Metals ≤ 40 ppm

Cation Lead (Pb): ≤ 10 ppm
Arsenic (As): ≤ 3 ppm
Mercury (Hg): ≤ 1 ppm
Cadmium (Cd): < 1 ppm

Insoluble material ≤ 0.2% in Water

Related Substances Sodium chloride, Sodium sulphate & Volatile matter: ≤ 15%
Combined ether extracts: ≤ 0.2%
Subsidiary dyes: ≤ 3.0%
Dye intermediates: ≤ 0.5%

Dye content ≥ 85% (Dye content, dried basis)
Dried at 105 ± 1 °C for 2h.

Storage Store at RT

For Laboratory Use Only