

Chem-Impex International, Inc.

Tel: (630) 766-2112

E-mail: sales@chemimpex.com

Shipping and Correspondence:

935 Dillon Drive

Wood Dale, IL 60191

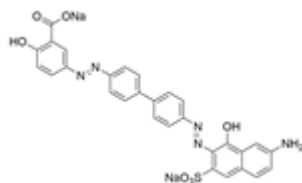
Fax: (630) 766-2218

Web site: www.chemimpex.com

Manufacturing site:

825 Dillon Drive

Wood Dale, IL 60191



Product Specifications

Catalogue Number	38550
Product	Direct fast brown M Direct brown M
CAS Number	2429-82-5
Molecular Formula	C ₂₉ H ₁₉ N ₅ Na ₂ O ₇ S
Molecular Weight	627.54

Appearance	Light yellow to brown to dark green powder to crystal
UV Ratios	$\lambda_{\max} = 520 - 524 \text{ nm (MeOH)}$ Absorbance (E1% 1cm) : $\geq 150 \text{ (MeOH, 520 - 524 nm)}$
Grade	CI 22311
Storage	Store at RT

For Laboratory Use Only