

# Chem-Impex International, Inc.

---

**Tel:** (630) 766-2112

**E-mail:** sales@chemimpex.com

**Shipping and Correspondence:**

935 Dillon Drive

Wood Dale, IL 60191

**Fax:** (630) 766-2218

**Web site:** www.chemimpex.com

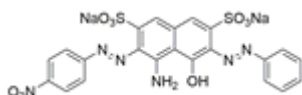
**Manufacturing site:**

825 Dillon Drive

Wood Dale, IL 60191

---

## Product Specifications



**Catalogue Number** 38507

**Product** **Solvent black 5**

**CAS Number** 11099-03-9

---

**Appearance** Black powder

**Clarity & Color** Hue : Bluish black

**Solubility** Soluble in ethanol (30 - 40 g/L)

**Water Content (Karl Fisher)** ≤ 5%

**pH** 6 - 8

**UV Ratios** Absorbance : at  $\lambda_{max}$ . 565 nm of 0.002% solution = 0.30

**Dye content** 98 - 102%

**Grade** CI 50415

**Storage** Store at RT

**Additional Information** dE : ≤ 1

**For Laboratory Use Only**