

# Chem-Impex International, Inc.

---

**Tel:** (630) 766-2112

**E-mail:** sales@chemimpex.com

**Shipping and Correspondence:**

935 Dillon Drive

Wood Dale, IL 60191

**Fax:** (630) 766-2218

**Web site:** www.chemimpex.com

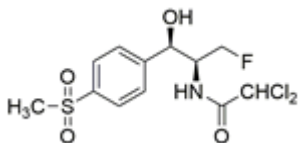
**Manufacturing site:**

825 Dillon Drive

Wood Dale, IL 60191

---

## Product Specifications



<b>Catalogue Number</b>	38432
<b>Product</b>	<b>Florfenicol</b> 2,2-Dichloro-N-[(1R,2S)-3-fluoro-1-hydroxy-1-(4-D-(-)-threo-2-Dichloroacetamido-3-fluoro-1-(4-
<b>CAS Number</b>	73231-34-2
<b>Molecular Formula</b>	C <sub>12</sub> H <sub>14</sub> Cl <sub>2</sub> FNO <sub>4</sub> S
<b>Molecular Weight</b>	358.21

---

<b>Appearance</b>	White to off-white powder or crystalline powder
<b>Melting Point</b>	152 - 156 °C
<b>Heavy Metals</b>	≤ 20 ppm
<b>Anion</b>	Chlorides : ≤ 0.02% Fluorine : ≥ 4.8%
<b>Water Content (Karl Fisher)</b>	≤ 0.5%
<b>pH</b>	4.5 - 6.5
<b>Optical Rotation</b>	[α] <sub>D</sub> /20 = -16 to -19 °
<b>Related Substances</b>	Single impurity : ≤ 0.5% Total impurities : ≤ 2%
<b>Residue On Ignition</b>	≤ 0.1%
<b>Assay (anhydrous basis)</b>	98 - 101%
<b>Storage</b>	Store at RT

**For Laboratory Use Only**