

Chem-Impex International, Inc.

Tel: (630) 766-2112

E-mail: sales@chemimpex.com

Shipping and Correspondence:

935 Dillon Drive

Wood Dale, IL 60191

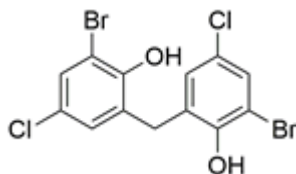
Fax: (630) 766-2218

Web site: www.chemimpex.com

Manufacturing site:

825 Dillon Drive

Wood Dale, IL 60191



Product Specifications

Catalogue Number	38428
Product	2,2'-Methylenebis(6-bromo-4-chlorophenol) Bis(3-bromo-5-chloro-2-hydroxyphenyl)methane Bromochlorophen
CAS Number	15435-29-7
Molecular Formula	C ₁₃ H ₈ Br ₂ Cl ₂ O ₂
Molecular Weight	426.91

Appearance	White to almost white powder to crystal
Melting Point	190 - 192 °C (dec.)
Purity by GC	≥ 95%
Storage	Store at 2 - 8 °C

For Laboratory Use Only