

Chem-Impex International, Inc.

Tel: (630) 766-2112

E-mail: sales@chemimpex.com

Shipping and Correspondence:

935 Dillon Drive

Wood Dale, IL 60191

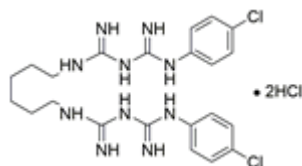
Fax: (630) 766-2218

Web site: www.chemimpex.com

Manufacturing site:

825 Dillon Drive

Wood Dale, IL 60191



Product Specifications

Catalogue Number	38425
Product	Chlorhexidine dihydrochloride 1,1'-Hexamethylenebis[5-(4-chlorophenyl)biguanide] dihydrochloride
CAS Number	3697-42-5
Molecular Formula	C ₂₂ H ₃₀ Cl ₂ N ₁₀ •2HCl
Molecular Weight	578.37

Appearance	White to almost white powder to crystal
Melting Point	133 - 135 °C
Assay by titration	≥ 96%
Storage	Store at 2 - 8 °C

For Laboratory Use Only