

Chem-Impex International, Inc.

Tel: (630) 766-2112

E-mail: sales@chemimpex.com

Shipping and Correspondence:

935 Dillon Drive

Wood Dale, IL 60191

Fax: (630) 766-2218

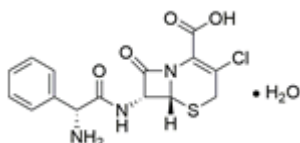
Web site: www.chemimpex.com

Manufacturing site:

825 Dillon Drive

Wood Dale, IL 60191

Product Specifications



Catalogue Number	38383
Product	Cefaclor monohydrate
CAS Number	70356-03-5
Molecular Formula	C ₁₅ H ₁₄ ClN ₃ O ₄ S•H ₂ O
Molecular Weight	385.82

Appearance	White or slightly yellow powder
Solubility	Slightly soluble in water, practically insoluble in methanol and in methylene chloride.
Water Content (Karl Fisher)	3.0 - 6.5%
pH	3.0 - 4.5
Mould and Yeast	≤ 100 cfu/g
Optical Rotation	[α] _{D20} = 101 - 111 °
Infrared Spectrum	Conforms to structure
Residual Solvents	Methanol : ≤ 0.3% Methylene chloride : ≤ 0.06% Acetone : ≤ 0.5% DMF : ≤ 0.088%
E. Coli	Not detectable
Microbial Count	≤ 1000 cfu/g (TAB)
Related Substances	Any impurity : ≤ 0.5% Total impurities : ≤ 2%
Assay (anhydrous basis)	96 - 102%
Storage	Store at 0 - 8 °C

For Laboratory Use Only