

Chem-Impex International, Inc.

Tel: (630) 766-2112

E-mail: sales@chemimpex.com

Shipping and Correspondence:

935 Dillon Drive

Wood Dale, IL 60191

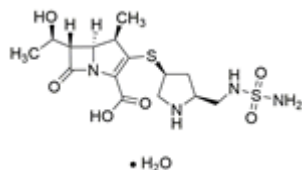
Fax: (630) 766-2218

Web site: www.chemimpex.com

Manufacturing site:

825 Dillon Drive

Wood Dale, IL 60191



Product Specifications

Catalogue Number 38380

Product

Doripenem monohydrate

(4R,5S,6S)-6-[(1R)-1-Hydroxyethyl]-4-methyl-7-oxo-3-[(3S,5S)-5-

CAS Number

364622-82-2

Molecular Formula

C₁₅H₂₄N₄O₆S₂•H₂O

Molecular Weight

438.52

Appearance

White to light yellow to light orange powder to crystal

Melting Point

173 °C (dec.)

Optical Rotation

32 - 37 ° (C=1, H₂O)

Purity by HPLC

≥ 98%

Storage

Store at 2 - 8 °C

For Laboratory Use Only