

# Chem-Impex International, Inc.

---

**Tel:** (630) 766-2112

**E-mail:** sales@chemimpex.com

**Shipping and Correspondence:**

935 Dillon Drive

Wood Dale, IL 60191

**Fax:** (630) 766-2218

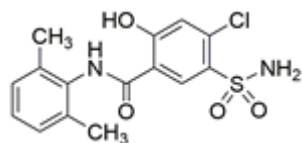
**Web site:** www.chemimpex.com

**Manufacturing site:**

825 Dillon Drive

Wood Dale, IL 60191

---



## Product Specifications

<b>Catalogue Number</b>	38365
<b>Product</b>	<b>Xipamide</b> 4-Chloro- <i>N</i> -(2,6-dimethylphenyl)-2-hydroxy-5-sulfamoylbenzamide
<b>CAS Number</b>	14293-44-8
<b>Molecular Formula</b>	C <sub>15</sub> H <sub>15</sub> ClN <sub>2</sub> O <sub>4</sub> S
<b>Molecular Weight</b>	354.81

---

<b>Appearance</b>	White to almost white powder to crystal
<b>Melting Point</b>	260 °C
<b>Purity by HPLC</b>	≥ 98%
<b>Application</b>	Store under inert gas
<b>Storage</b>	Store at 2 - 8 °C

**For Laboratory Use Only**