

# Chem-Impex International, Inc.

---

**Tel:** (630) 766-2112

**E-mail:** sales@chemimpex.com

**Shipping and Correspondence:**

935 Dillon Drive

Wood Dale, IL 60191

**Fax:** (630) 766-2218

**Web site:** www.chemimpex.com

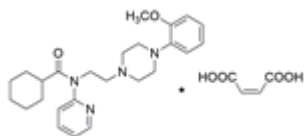
**Manufacturing site:**

825 Dillon Drive

Wood Dale, IL 60191

---

## Product Specifications



<b>Catalogue Number</b>	38364
<b>Product</b>	<b>WAY-100635 maleate</b> <i>N</i> -[2-[4-(2-Methoxyphenyl)piperazin-1-yl]ethyl]- <i>N</i> -(pyridin-2-yl)
<b>CAS Number</b>	1092679-51-0
<b>Molecular Formula</b>	C <sub>25</sub> H <sub>34</sub> N <sub>4</sub> O <sub>2</sub> •C <sub>4</sub> H <sub>4</sub> O <sub>4</sub>
<b>Molecular Weight</b>	538.65

---

<b>Appearance</b>	White to almost white powder to crystal
<b>Purity by HPLC</b>	≥ 98%
<b>Application</b>	Store under inert gas
<b>Storage</b>	Store at 2 - 8 °C

**For Laboratory Use Only**