

Chem-Impex International, Inc.

Tel: (630) 766-2112

E-mail: sales@chemimpex.com

Shipping and Correspondence:

935 Dillon Drive

Wood Dale, IL 60191

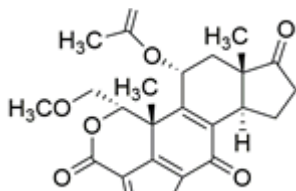
Fax: (630) 766-2218

Web site: www.chemimpex.com

Manufacturing site:

825 Dillon Drive

Wood Dale, IL 60191



Product Specifications

| | |
|--------------------------|--|
| Catalogue Number | 38363 |
| Product | Wortmannin KY 12420 |
| CAS Number | 19545-26-7 |
| Molecular Formula | C ₂₃ H ₂₄ O ₈ |
| Molecular Weight | 428.44 |

| | |
|-------------------------|--|
| Appearance | White to yellow powder to crystal |
| Melting Point | 235 - 239 °C |
| Optical Rotation | 85 - 89 ° (C=0.17, CHCl ₃) |
| Purity by HPLC | ≥ 98% |
| Storage | Store at < -20 °C |

For Laboratory Use Only