

# Chem-Impex International, Inc.

---

**Tel:** (630) 766-2112

**E-mail:** sales@chemimpex.com

**Shipping and Correspondence:**

935 Dillon Drive

Wood Dale, IL 60191

**Fax:** (630) 766-2218

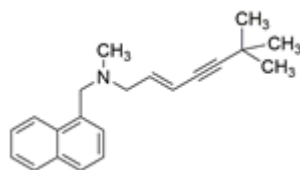
**Web site:** www.chemimpex.com

**Manufacturing site:**

825 Dillon Drive

Wood Dale, IL 60191

---



## Product Specifications

<b>Catalogue Number</b>	38335
<b>Product</b>	<b>Terbinafine</b> <i>trans-N</i> -(6,6-Dimethyl-2-hepten-4-ynyl)- <i>N</i> -methyl-1- ( <i>E</i> )- <i>N</i> ,6,6-Trimethyl- <i>N</i> -(naphthalen-1-ylmethyl)hept-2-en-4-yn-1-
<b>CAS Number</b>	91161-71-6
<b>Molecular Formula</b>	C <sub>21</sub> H <sub>25</sub> N
<b>Molecular Weight</b>	291.44

---

<b>Appearance</b>	White to light yellow powder to crystal
<b>Melting Point</b>	41 - 45 °C
<b>Assay by titration</b>	≥ 98%
<b>Purity by HPLC</b>	≥ 98%
<b>Storage</b>	Store at < 0 °C

**For Laboratory Use Only**