

Chem-Impex International, Inc.

Tel: (630) 766-2112

E-mail: sales@chemimpex.com

Shipping and Correspondence:

935 Dillon Drive

Wood Dale, IL 60191

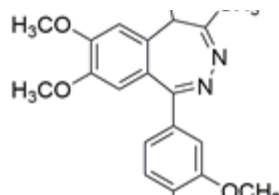
Fax: (630) 766-2218

Web site: www.chemimpex.com

Manufacturing site:

825 Dillon Drive

Wood Dale, IL 60191



Product Specifications

Catalogue Number 38328

Product **Tofisopam**

1-(3,4-Dimethoxyphenyl)-5-ethyl-7,8-dimethoxy-4-methyl-5H-

1-(3,4-Dimethoxyphenyl)-5-ethyl-7,8-dimethoxy-4-methyl-5H-2,3-

CAS Number 22345-47-7

Molecular Formula C₂₂H₂₆N₂O₄

Molecular Weight 382.46

Appearance White to light yellow powder to crystal

Purity by HPLC ≥ 98%

Storage Store at 2 - 8 °C

For Laboratory Use Only