

# Chem-Impex International, Inc.

---

**Tel:** (630) 766-2112

**E-mail:** sales@chemimpex.com

**Shipping and Correspondence:**

935 Dillon Drive

Wood Dale, IL 60191

**Fax:** (630) 766-2218

**Web site:** www.chemimpex.com

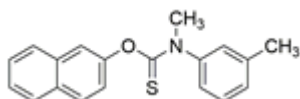
**Manufacturing site:**

825 Dillon Drive

Wood Dale, IL 60191

---

## Product Specifications



<b>Catalogue Number</b>	38312
<b>Product</b>	<b>Tolnaftate</b> O-2-Naphthyl methyl(3-methylphenyl)carbamothioate Methyl(3-methylphenyl)carbamothioic acid O-2-Naphthyl ester
<b>CAS Number</b>	2398-96-1
<b>Molecular Formula</b>	C <sub>19</sub> H <sub>17</sub> NOS
<b>Molecular Weight</b>	307.41

---

<b>Appearance</b>	White to almost white powder to crystal
<b>Melting Point</b>	111 - 115 °C
<b>Purity by HPLC</b>	≥ 97%
<b>Storage</b>	Store at 2 - 8 °C

**For Laboratory Use Only**