

Chem-Impex International, Inc.

Tel: (630) 766-2112

E-mail: sales@chemimpex.com

Shipping and Correspondence:

935 Dillon Drive

Wood Dale, IL 60191

Fax: (630) 766-2218

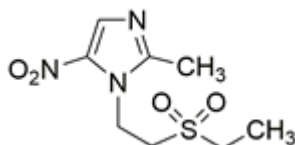
Web site: www.chemimpex.com

Manufacturing site:

825 Dillon Drive

Wood Dale, IL 60191

Product Specifications



Catalogue Number 38311

Product **Tinidazole**
1-[2-(Ethylsulfonyl)ethyl]-2-methyl-5-nitroimidazole

CAS Number 19387-91-8

Molecular Formula $C_8H_{13}N_3O_4S$

Molecular Weight 247.27

Appearance Pale yellow crystals or crystalline powder

Clarity & Color A 5 % solution in acetone should be clear and not more intensely colored than reference solution Y5.

Solubility Soluble in acetone and dichloromethane. Sparingly soluble in methanol, slightly soluble in ethanol (95%) and in chloroform. Practically insoluble in water.

Odor Slight and characterisitic odor

Melting Point 125 - 128 °C

Infrared Spectrum Conforms to structure

UV Ratios Examined of 0.001% solution in methanol between 220 nm and 350 nm the solution shows an absorption maximum at 310 nm the specific absorbance at the maximum is 340 - 360 nm.

Loss on Drying $\leq 0.5\%$

Related Substances
Impurity A (2-Methyl-5-Nitroimidazole) : $\leq 0.2\%$
Impurity B 1-[2-(ethylsulphonyl)ethyl]-2-Methyl-4-Nitro-1H-Imidazole : $\leq 0.2\%$
Any individual unknown impurity : $\leq 0.1\%$
Total unknown impurities : $\leq 0.4\%$

Sulfated Ash $\leq 0.1\%$

Assay 98 - 101% (On dried basis)

Grade Meets BP Specification

Storage Store at 2 - 8 °C

Additional Information Identification by chemical : A greenish yellow color is produced.

Product Specifications

Catalog Number: 38311

For Laboratory Use Only