

Chem-Impex International, Inc.

Tel: (630) 766-2112

E-mail: sales@chemimpex.com

Shipping and Correspondence:

935 Dillon Drive

Wood Dale, IL 60191

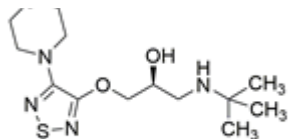
Fax: (630) 766-2218

Web site: www.chemimpex.com

Manufacturing site:

825 Dillon Drive

Wood Dale, IL 60191



Product Specifications

HO₂C CO₂H

Catalogue Number	38300
Product	Timolol maleate S-(–)-1-(t-Butylamino)-3-[(4-morpholino-1,2,5-thiadiazol-3-yl)] Timolol hydrogen maleate
CAS Number	26921-17-5
Molecular Formula	C ₁₃ H ₂₄ N ₄ O ₃ S•C ₄ H ₄ O ₄
Molecular Weight	432.49

Appearance	White to almost white powder to crystal
Melting Point	197 - 199 °C (dec.)
Optical Rotation	-4.5 to -6.5 ° (C=1, 1 mol/L HCl)
Assay by titration	≥ 98%
Purity by HPLC	≥ 98 %
Storage	Store at 2 - 8 °C

For Laboratory Use Only