

# Chem-Impex International, Inc.

---

**Tel:** (630) 766-2112

**E-mail:** sales@chemimpex.com

**Shipping and Correspondence:**

935 Dillon Drive

Wood Dale, IL 60191

**Fax:** (630) 766-2218

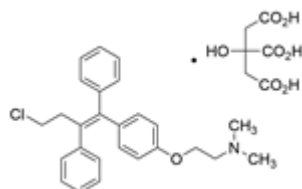
**Web site:** www.chemimpex.com

**Manufacturing site:**

825 Dillon Drive

Wood Dale, IL 60191

---



## Product Specifications

**Catalogue Number** 38295

**Product**

**Toremifene citrate**

(Z)-4-Chloro-1-(4-dimethylaminoethoxyphenyl)-1,2-diphenyl-1-

(Z)-2-[4-(4-Chloro-1,2-diphenyl-1-butenyl)phenoxy]-N,N-

**CAS Number**

89778-27-8

**Molecular Formula**

C<sub>26</sub>H<sub>28</sub>ClNO•C<sub>6</sub>H<sub>8</sub>O<sub>7</sub>

**Molecular Weight**

598.09

---

**Appearance**

White to almost white powder to crystal

**Melting Point**

162 °C(dec.)

**Assay by titration**

≥ 98%

**Purity by HPLC**

≥ 98%

**Storage**

Store at 2 - 8 °C

**For Laboratory Use Only**