

# Chem-Impex International, Inc.

---

**Tel:** (630) 766-2112

**E-mail:** sales@chemimpex.com

**Shipping and Correspondence:**

935 Dillon Drive

Wood Dale, IL 60191

**Fax:** (630) 766-2218

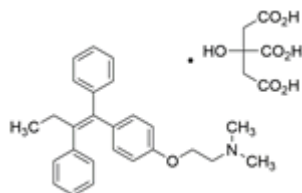
**Web site:** www.chemimpex.com

**Manufacturing site:**

825 Dillon Drive

Wood Dale, IL 60191

---



## Product Specifications

<b>Catalogue Number</b>	38282
<b>Product</b>	<b>Tamoxifen citrate</b> (Z)-1-(4-Dimethylaminoethoxyphenyl)-1,2-diphenyl-1-butene citrate
<b>CAS Number</b>	54965-24-1
<b>Molecular Formula</b>	C <sub>26</sub> H <sub>29</sub> NO•C <sub>6</sub> H <sub>8</sub> O <sub>7</sub>
<b>Molecular Weight</b>	563.65

---

<b>Warnings</b>	Light sensitive!
<b>Appearance</b>	White to almost white powder to crystal
<b>Cation</b>	Iron (Fe) : ≤ 0.005%
<b>Infrared Spectrum</b>	Conforms to structure
<b>Loss on Drying</b>	≤ 0.5% (105 °C, 4h)
<b>Residue On Ignition</b>	≤ 0.2%
<b>Assay</b>	99 - 101% (On dried basis)
<b>Storage</b>	Store at 2 - 8 °C
<b>Additional Information</b>	Identification : To pass test E-Isomer : ≤ 0.3%

**For Laboratory Use Only**