

Chem-Impex International, Inc.

Tel: (630) 766-2112

E-mail: sales@chemimpex.com

Shipping and Correspondence:

935 Dillon Drive

Wood Dale, IL 60191

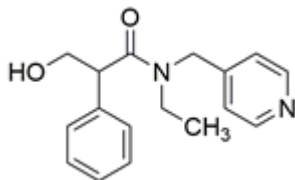
Fax: (630) 766-2218

Web site: www.chemimpex.com

Manufacturing site:

825 Dillon Drive

Wood Dale, IL 60191



Product Specifications

Catalogue Number	38277
Product	Tropicamide <i>N</i> -Ethyl- <i>N</i> -(4-pyridylmethyl)tropamide Ro 1-7683
CAS Number	1508-75-4
Molecular Formula	C ₁₇ H ₂₀ N ₂ O ₂
Molecular Weight	284.36

Appearance	White to almost white powder to crystal
Melting Point	97 - 100 °C
Assay by titration	≥ 99%
Purity by HPLC	≥ 99%
Storage	Store at 2 - 8 °C

For Laboratory Use Only