

# Chem-Impex International, Inc.

---

**Tel:** (630) 766-2112

**E-mail:** sales@chemimpex.com

**Shipping and Correspondence:**

935 Dillon Drive

Wood Dale, IL 60191

**Fax:** (630) 766-2218

**Web site:** www.chemimpex.com

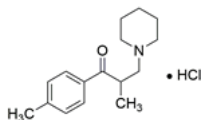
**Manufacturing site:**

825 Dillon Drive

Wood Dale, IL 60191

---

## Product Specifications



<b>Catalogue Number</b>	38276
<b>Product</b>	<b>Tolperisone hydrochloride</b> 2,4'-Dimethyl-3-piperidinopropiophenone hydrochloride Menopatul
<b>CAS Number</b>	3644-61-9
<b>Molecular Formula</b>	C <sub>16</sub> H <sub>23</sub> NO•HCl
<b>Molecular Weight</b>	281.82

---

<b>Appearance</b>	White crystalline powder
<b>Clarity &amp; Color</b>	Clear and colorless solution
<b>Solubility</b>	Very soluble in acetic acid, water and ethanol, soluble acetic anhydride is slightly soluble in acetone, almost insoluble in Indigo ether.
<b>Melting Point</b>	167 - 174 °C
<b>Heavy Metals</b>	≤ 20 ppm
<b>Anion</b>	Sulfate : ≤ 0.005%
<b>pH</b>	4.5 - 5.5
<b>Loss on Drying</b>	≤ 0.5%
<b>Related Substances</b>	Piperidine hydrochloride : ≤ 0.1%
<b>Residue On Ignition</b>	≤ 0.1%
<b>Assay</b>	≥ 98.5%
<b>Storage</b>	Store at RT
<b>Additional Information</b>	Identification 1, 2, 3 : To pass test Absorbance : 555 - 585

**For Laboratory Use Only**