

# Chem-Impex International, Inc.

---

**Tel:** (630) 766-2112

**E-mail:** sales@chemimpex.com

**Shipping and Correspondence:**

935 Dillon Drive

Wood Dale, IL 60191

**Fax:** (630) 766-2218

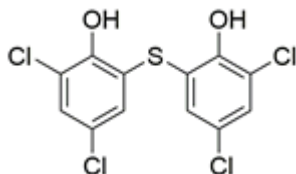
**Web site:** www.chemimpex.com

**Manufacturing site:**

825 Dillon Drive

Wood Dale, IL 60191

---



## Product Specifications

<b>Catalogue Number</b>	38271
<b>Product</b>	<b>2,2'-Thiobis(4,6-dichlorophenol)</b> Bis(3,5-dichloro-2-hydroxyphenyl) sulfide Bithionol
<b>CAS Number</b>	97-18-7
<b>Molecular Formula</b>	C <sub>12</sub> H <sub>6</sub> Cl <sub>4</sub> O <sub>2</sub> S
<b>Molecular Weight</b>	356.04

---

<b>Appearance</b>	White to light yellow powder to crystal
<b>Melting Point</b>	184 - 188 °C
<b>Assay by titration</b>	≥ 97%
<b>Purity by GC</b>	≥ 97%
<b>Storage</b>	Store at 2 - 8 °C

**For Laboratory Use Only**