

Chem-Impex International, Inc.

Tel: (630) 766-2112

E-mail: sales@chemimpex.com

Shipping and Correspondence:

935 Dillon Drive

Wood Dale, IL 60191

Fax: (630) 766-2218

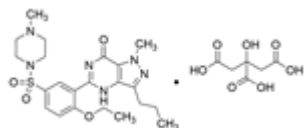
Web site: www.chemimpex.com

Manufacturing site:

825 Dillon Drive

Wood Dale, IL 60191

Product Specifications



Catalogue Number	38268
Product	Sildenafil citrate 1-[[[3-(4,7-Dihydro-1-methyl-7-oxo-3-propyl-1H-pyrazolo[4,3-d]5-[2-Ethoxy-5-[(4-methylpiperazin-1-yl)sulfonyl]phenyl]-1-methyl-3-
CAS Number	171599-83-0
Molecular Formula	C ₂₂ H ₃₀ N ₆ O ₄ S•C ₆ H ₈ O ₇
Molecular Weight	666.7

Appearance	White to off-white powder
Solubility	Soluble in Dimethylformamide, sparingly soluble in acetic acid and slightly soluble in methanol.
Heavy Metals	≤ 20 ppm
Water Content (Karl Fisher)	≤ 2.5%
Infrared Spectrum	Conforms to structure
Related Substances	N-Oxide impurity : ≤ 0.5% Chloro sulphonyl impurity : ≤ 0.2% Any other impurity : ≤ 0.3% Total impurities : ≤ 1%
Sulfated Ash	≤ 0.1%
Purity by HPLC	98 - 102% (on Anhydrous basis)
Grade	Meets IP Specification
Storage	Store at 2 - 8 °C
Additional Information	Citric acid content : 28 - 34%

For Laboratory Use Only