

Chem-Impex International, Inc.

Tel: (630) 766-2112

E-mail: sales@chemimpex.com

Shipping and Correspondence:

935 Dillon Drive

Wood Dale, IL 60191

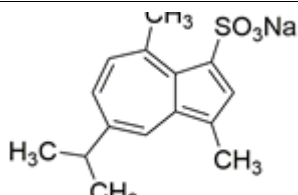
Fax: (630) 766-2218

Web site: www.chemimpex.com

Manufacturing site:

825 Dillon Drive

Wood Dale, IL 60191



Product Specifications

Catalogue Number	38267
Product	Sodium gualenate 7-Isopropyl-1,4-dimethyl-azulene-3-sulfonic acid sodium salt Sodium 7-isopropyl-1,4-dimethylazulene-3-sulfonate
CAS Number	6223-35-4
Molecular Formula	C ₁₅ H ₁₇ NaO ₃ S
Molecular Weight	300.35

Warnings	<i>Light sensitive! Moisture sensitive! Heat sensitive!</i>
Appearance	Blue to dark blue powder to crystalline
Melting Point	97 - 99 °C
Assay (anhydrous basis)	≥ 95%
Purity by HPLC	≥ 98%
Application	Store under inert gas
Storage	Store at < 0 °C

For Laboratory Use Only