

Chem-Impex International, Inc.

Tel: (630) 766-2112

E-mail: sales@chemimpex.com

Shipping and Correspondence:

935 Dillon Drive

Wood Dale, IL 60191

Fax: (630) 766-2218

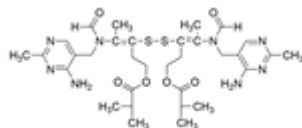
Web site: www.chemimpex.com

Manufacturing site:

825 Dillon Drive

Wood Dale, IL 60191

Product Specifications



Catalogue Number	38266
Product	Sulbutiamine Bisibuthiamine O-Isobutyrylthiamine disulfide
CAS Number	3286-46-2
Molecular Formula	C ₃₂ H ₄₆ N ₈ O ₆ S ₂
Molecular Weight	702.89

Appearance	White to almost white powder to crystal
Melting Point	137 °C(dec.)
Assay by titration	≥ 98%
Purity by HPLC	≥ 98%
Storage	Store at 2 - 8 °C

For Laboratory Use Only