

# Chem-Impex International, Inc.

---

**Tel:** (630) 766-2112

**E-mail:** sales@chemimpex.com

**Shipping and Correspondence:**

935 Dillon Drive

Wood Dale, IL 60191

**Fax:** (630) 766-2218

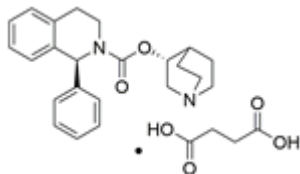
**Web site:** www.chemimpex.com

**Manufacturing site:**

825 Dillon Drive

Wood Dale, IL 60191

---



## Product Specifications

<b>Catalogue Number</b>	38265
<b>Product</b>	<b>Solifenacin succinate</b> (1S)-(3R)-1-azabicyclo[2.2.2]oct-3-yl 3,4-dihydro-1-phenyl-2(1H)-
<b>CAS Number</b>	242478-38-2
<b>Molecular Formula</b>	C <sub>23</sub> H <sub>26</sub> N <sub>2</sub> O <sub>2</sub> •C <sub>4</sub> H <sub>6</sub> O <sub>4</sub>
<b>Molecular Weight</b>	480.56

---

<b>Appearance</b>	White to almost white powder to crystal
<b>Melting Point</b>	145 - 149 °C
<b>Optical Rotation</b>	[α] <sup>20</sup> <sub>D</sub> = 35 - 45 ° (C = 1 in H <sub>2</sub> O)
<b>Purity by HPLC</b>	≥ 98%
<b>Storage</b>	Store at 2 - 8 °C

**For Laboratory Use Only**