

Chem-Impex International, Inc.

Tel: (630) 766-2112

E-mail: sales@chemimpex.com

Shipping and Correspondence:

935 Dillon Drive

Wood Dale, IL 60191

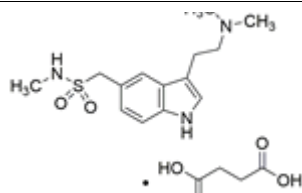
Fax: (630) 766-2218

Web site: www.chemimpex.com

Manufacturing site:

825 Dillon Drive

Wood Dale, IL 60191



Product Specifications

Catalogue Number	38252
Product	Sumatriptan succinate 3-[2-(Dimethylamino)ethyl]-1H-indol-5-yl-N-
CAS Number	103628-48-4
Molecular Formula	C ₁₄ H ₂₁ N ₃ O ₂ S•C ₄ H ₆ O ₄
Molecular Weight	413.49

Warnings	Light sensitive!
Appearance	White or almost white powder
Solubility	Freely soluble in water, sparingly soluble in methanol, practically insoluble in dichloromethane.
Water Content (Karl Fisher)	≤ 1%
pH	4.5 - 5.3
Infrared Spectrum	Conforms to structure
UV Ratios	Absorbance : ≤ 0.10
Residual Solvents	Methanol : ≤ 3000 ppm, Isopropyl alcohol : ≤ 5000 ppm, Ethyl acetate : ≤ 5000 ppm, Acetone : ≤ 5000 ppm, Methylene dichloride : ≤ 600 ppm, Benzene : ≤ 2 ppm
Related Substances	Impurity A : ≤ 0.6%, Impurity H : ≤ 0.3%, Impurity B : ≤ 0.5% Impurity C : ≤ 0.5%, Impurity D : ≤ 0.5%, Impurity E : ≤ 0.15% Unspecified impurities : ≤ 0.1%, Total impurity : ≤ 0.6%
Sulfated Ash	≤ 0.1%
Purity by HPLC	97.5 - 102.0% (on anhydrous substance)
Storage	Store at 2 - 8 °C

Product Specifications

Catalog Number: 38252

For Laboratory Use Only