

# Chem-Impex International, Inc.

Tel: (630) 766-2112

E-mail: sales@chemimpex.com

Shipping and Correspondence:

935 Dillon Drive

Wood Dale, IL 60191

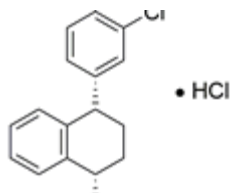
Fax: (630) 766-2218

Web site: www.chemimpex.com

Manufacturing site:

825 Dillon Drive

Wood Dale, IL 60191



## Product Specifications

<b>Catalogue Number</b>	38249
<b>Product</b>	<b>Sertraline hydrochloride</b> (1 <i>S</i> ,4 <i>S</i> )-1-(3,4-Dichlorophenyl)-1,2,3,4-tetrahydro-4-(methylamino) Sertraline hydrochloride
<b>CAS Number</b>	79559-97-0
<b>Molecular Formula</b>	C <sub>17</sub> H <sub>17</sub> Cl <sub>2</sub> N•HCl
<b>Molecular Weight</b>	342.69

<b>Appearance</b>	White or off-white crystalline powder
<b>Solubility</b>	Complies to reference
<b>Water Content (Karl Fisher)</b>	≤ 0.5%
<b>Residual Solvents</b>	Ethanol : ≤ 5000 ppm 1-Butanol : ≤ 5000 ppm
<b>Related Substances</b>	Enantiomeric purity : ≤ 1.5% Impurity A : ≤ 0.2% Impurity B : ≤ 0.2% Impurity C and D : ≤ 0.8% Impurity E : ≤ 0.2% Impurity F : ≤ 0.2% Unspecified impurity A : ≤ 0.2% Total impurities : ≤ 1.5%
<b>Sulfated Ash</b>	≤ 0.2%
<b>Assay</b>	97.5 - 102.0% (Dry basis)
<b>Grade</b>	Meets EP specification
<b>Storage</b>	Store at 0 - 8 °C
<b>Additional Information</b>	Identification A, B and C : To pass test

**For Laboratory Use Only**