

Chem-Impex International, Inc.

Tel: (630) 766-2112

E-mail: sales@chemimpex.com

Shipping and Correspondence:

935 Dillon Drive

Wood Dale, IL 60191

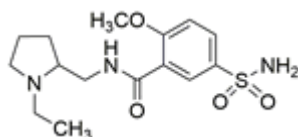
Fax: (630) 766-2218

Web site: www.chemimpex.com

Manufacturing site:

825 Dillon Drive

Wood Dale, IL 60191



Product Specifications

Catalogue Number	38248
Product	(±)-Sulpiride (±)- <i>N</i> -[(1-Ethylpyrrolidin-2-yl)methyl]-2-methoxy-5-(±)-5-(Aminosulfonyl)- <i>N</i> -[(1-ethyl-2-pyrrolidinyl)methyl]-2-
CAS Number	15676-16-1
Molecular Formula	C ₁₅ H ₂₃ N ₃ O ₄ S
Molecular Weight	341.43

Appearance	White to almost white powder to crystal
Melting Point	179 - 185 °C
Assay by titration	≥ 98%
Purity by HPLC	≥ 98%
Storage	Store at 2 - 8 °C

For Laboratory Use Only